

1100nm 1x2 2x2 SM Fiber Fused Coupler

1100nm 1x2, 2x2 SM Fused Coupler is built with fused biconical taper (FBT) technology, optical signal power can be splitted into two parts with even or various coupling ratio by the FBT Coupler, it's widely applied in fiber optic transmission and fiber optic sensor field, the MM and PM types are available upon request.

Application:

Optical Signal Transmission
Fiber Optic Sensor
Fiber Amplifier
Optical Diffraction System

Features:

Low Excess Loss
High Return Loss
Low Insertion Loss
High Reliability



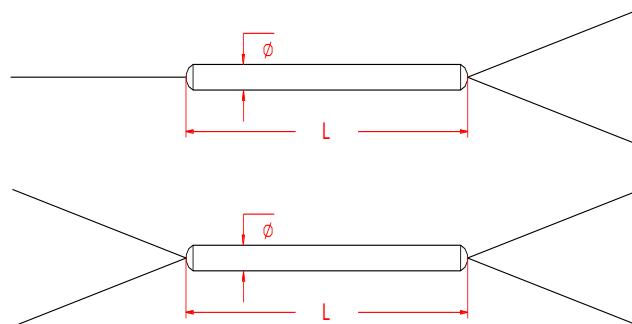
Specification:

| Parameter | Symbol | Value | Unit | |
|----------------------------------|-----------|-----------------------|--------------------|----|
| Center Wavelength | λ | 1100 | nm | |
| Bandwidth | BW | ± 10 | nm | |
| Max. Excess Loss | EL | 0.8 | dB | |
| Max. Insertion Loss | IL | 50/50 | 3.8/3.8 | dB |
| | | 40/60 | 4.8/2.8 | dB |
| | | 30/70 | 6.1/2.0 | dB |
| | | 20/80 | 8.0/1.3 | dB |
| | | 10/90 | 12.0/0.8 | dB |
| | | 5/95 | 13.8/0.4 | dB |
| | | 3/97 | 19.0/0.4 | dB |
| | | 2/98 | 20.0/0.3 | dB |
| | | 1/99 | 22.0/0.3 | dB |
| Max. Polarization Dependent Loss | PDL | 0.2 | dB | |
| Min. Directivity | | 50 | dB | |
| Min. Return Loss | RL | 50 | dB | |
| Fiber Type | | HI 1060 | - | |
| Max. Tensile Load | | 5 | N | |
| Max. Optical Power (CW) | P | 2 | W | |
| Operating Temperature | T | -40~75 | $^{\circ}\text{C}$ | |
| Storage Temperature | T | -40~85 | $^{\circ}\text{C}$ | |
| Package Dimension | | $\Phi 3.0 \times L54$ | mm | |

Notice: Above specifications are tested at center wavelength without connector in room temperature @23 $^{\circ}\text{C}$.

For devices with connectors, IL will be 0.3dB higher, RL will be 5dB lower, Connectors only 1W CW optical power guarantee.

Drawing:



Ordering Information (Part Number):**SMFUC-*WWW*-*PP*-*RR*-*FF*-*D*-*J*-*LL*-*CC***

| WWW | PP | RR | FF | J | LL | CC |
|-------------------|-------------|-----------------------|-------------------|----------------------|---------------------|------------------|
| Wavelength | Port | Coupling Ratio | Fiber Type | Fiber Jacket | Fiber Length | Connector |
| 1100 - 1100nm | 12 - 1x2 | 01 - 1/99 | H1 - HI 1060 | B - 250um Bare Fiber | 05 - 0.5m | NE - None |
| 1120 - 1120nm | 22 - 2x2 | 02 - 2/98 | | 9 - 900um Loose Tube | 10 - 1.0m | FA - FC/APC |
| 1150 - 1150nm | | 03 - 3/97 | | | 15 - 1.5m | FU - FC/UPC |
| 1180 - 1180nm | | 05 - 5/95 | | | 20 - 2.0m | SA - SC/APC |
| 1200 - 1200nm | | 10 - 10/90 | | | SS - Specify | SU - SU/APC |
| 1230 - 1230nm | | 20 - 20/80 | | | | LA - LC/APC |
| 1250 - 1250nm | | 30 - 30/70 | | | | LU - LC/UPC |
| SSSS - Specify | | 40 - 40/60 | | | | SS - Specify |
| | | 50 - 50/50 | | | | |
| | | SS - Specify | | | | |