

## 790nm 1x2 2x2 PM Fiber Fused Coupler

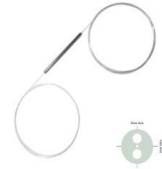
790nm 1x2, 2x2 Polarization Maintaining (PM) Fused Coupler is built with fused biconical taper (FBT) technology, it can be used in split the optical signal power into two parts with even or various coupling ratio and keep the polarization maintaining, it's widely applied in fiber optic sensor, fiber amplifier system and fiber optic diffraction field.

### Application:

Fiber Optic Amplifier  
Fiber Optic Sensor  
Fiber Laser  
Optical Diffraction System

### Features:

Low Excess Loss  
Low Insertion Loss  
High Extinction Ratio  
High Reliability



### Specification:

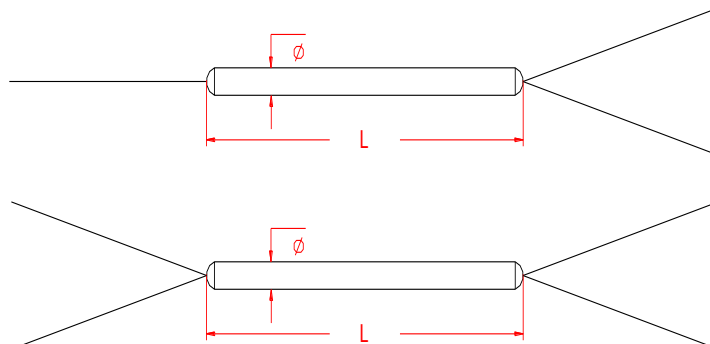
Parameter	Symbol	Value	Unit	
Center Wavelength	$\lambda$	790	nm	
Bandwidth	BW	$\pm 15$	nm	
Max. Excess Loss	EL	0.8	dB	
Max. Insertion Loss	IL	50/50 ( $\pm 3.5$ )	3.6/3.6	dB
		40/60 ( $\pm 2.5$ )	5.2/3.1	dB
		30/70 ( $\pm 2.5$ )	5.8/2.0	dB
		20/80 ( $\pm 2.0$ )	8.0/1.5	dB
		10/90 ( $\pm 1.2$ )	11.6/1.2	dB
		5/95 ( $\pm 0.8$ )	14.8/0.8	dB
		3/97 ( $\pm 0.7$ )	17.0/0.5	dB
		2/98 ( $\pm 0.6$ )	18.4/0.4	dB
		1/99 ( $\pm 0.4$ )	22.0/0.35	dB
Min. Extinction Ratio	ER	For Ratio > 10% Port	20	dB
		For 5% $\leq$ Ratio $\leq$ 10% Port	18	dB
		For Ratio < 5% Port	16	dB
Min. Directivity		50	dB	
Min. Return Loss	RL	50	dB	
Fiber Type		PM Panda Fiber	-	
Max. Tensile Load		5	N	
Max. Optical Power (CW)	P	2	W	
Operating Temperature	T	-40~75	$^{\circ}\text{C}$	
Storage Temperature	T	-40~85	$^{\circ}\text{C}$	
Package Dimension		$\Phi 3.0 \times L54$	mm	

Notice: Above specifications are tested at center wavelength without connector in room temperature @23 $^{\circ}\text{C}$ .

For devices with connectors, IL will be 0.3dB higher, EL will be 0.2dB higher, ER will be 2dB lower, slow axis is default aligned to the connector key.

If need optical power more than 2W CW, please contact us to confirm. Connectors only 1W (Continue Wavelength) optical power guarantee.

### Drawing:



**Ordering Information (Part Number):****PMFUC-*WWW-PP-A-RR-J-LL-CC***

<b>WWW</b>	<b>PP</b>	<b>A</b>	<b>RR</b>	<b>J</b>	<b>LL</b>	<b>CC</b>	
<b>Wavelength</b>	<b>Port</b>	<b>Working Axis</b>	<b>Coupling Ratio</b>	<b>Fiber Jacket</b>	<b>Fiber Length</b>	<b>Connector</b>	
760 - 760nm	12 - 1x2	B - Both Axes	01 - 1/99	B - 250um Bare Fiber	05 - 0.5m	NE - None	
780 - 780nm	22 - 2x2	Working	02 - 2/98	9 - 900um Loose Tube	10 - 1.0m	FA - FC/APC	
785 - 785nm		S - Slow Axis	03 - 3/97		15 - 1.5m	FU - FC/UPC	
790 - 790nm		Working	05 - 5/95		20 - 2.0m	SA - SC/APC	
793 - 793nm		F - Fast Axis	10 - 10/90		SS - Specify		SU - SU/APC
		Working	20 - 20/80				LA - LC/APC
			30 - 30/70				LU - LC/UPC
		40 - 40/60	SS - Specify				
			50 - 50/50				
			SS - Specify				