

## 633nm PM Fixed In-line Optical Attenuator

633nm Polarization Maintaining (PM) Fixed In-line Optical Attenuator is a fiber component which can attenuate the optical power with a fixed attenuation value, the attenuation value can be up to 30dB, it's widely used in optical power testing system, fiber laser and fiber amplifier field. High power type is available upon request.

### Application:

Fiber Laser  
Fiber Amplifier  
Testing System  
Lab And Research

### Features:

High Extinction Ratio  
Low Excess Loss  
High Power  
High Attenuation



### Specification:

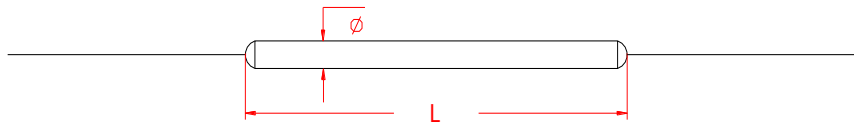
Parameter	Symbol	Value	Unit
Center Wavelength	$\lambda$	633	nm
Bandwidth	BW	$\pm 10$	nm
Typ. Excess Loss	EL	0.5	dB
Max. Excess Loss	EL	0.8	dB
Min. Extinction Ratio	ER	16	dB
Attenuation and Tolerance		1 $\pm$ 0.1, 2 $\pm$ 0.2, 3 $\pm$ 0.3, 5 $\pm$ 0.7, 10 $\pm$ 1.0, 15 $\pm$ 1.8, 20 $\pm$ 2.5, 30 $\pm$ 3.0 or customized	dB
Max. Optical Power (CW)	P	2	W
Max. Tensile Load		5	N
Fiber Type		PM630-HP fiber	-
Operating Temperature	T	-40~85	$^{\circ}$ C
Storage Temperature	T	-40~85	$^{\circ}$ C
Package Dimension		$\Phi 3.0 \times L54, \Phi 3.0 \times L70$	mm

Notice: Above specifications are tested at center wavelength without connector in room temperature @23 $^{\circ}$ C.

For devices with connectors, EL will be 0.2dB higher. ER will be 2dB lower, Connectors only 1W CW optical power guarantee.

Slow axis is default aligned to the connector key.

### Drawing:



### Ordering Information (Part Number):

PMFIA- <b>WWW</b> - <b>PP</b> - <b>AA</b> - <b>J</b> - <b>LL</b> - <b>CC</b>					
<b>WWW</b>	<b>PP</b>	<b>AA</b>	<b>J</b>	<b>LL</b>	<b>CC</b>
Wavelength	Port	Attenuation	Fiber Jacket	Fiber Length	Connector
633 - 633nm	11 - 1x1	01 - 1dB	B - 250um Bare Fiber	05 - 0.5m	NE - None
650 - 650nm		02 - 2dB	9 - 900um Loose Tube	10 - 1.0m	FA - FC/APC
680 - 680nm		03 - 3dB		15 - 1.5m	FU - FC/UPC
SSS - Specify		05 - 5dB		20 - 2.0m	SA - SC/APC
		10 - 10dB		SS - Specify	SU - SU/APC
		15 - 15dB			LA - LC/APC
		20 - 20dB			LU - LC/UPC
		30 - 30dB			SS - Specify
		SS - Specify			