

High Power 1050±50nm Broadband Polarization Insensitive Optical Isolator

High Power 1050±50nm Broadband Polarization Insensitive Optical Isolator is a fiber passive component built with TGG crystal, it allows light signal to be delivered in one forward direction and avoid the back reflection light, it's widely used in OCT system, fiber optic sensor system to protect the light source and lower down the system optical signal noise. The higher power type is available upon request, if need pulse type please contact us to confirm.

Application:

OCT
Fiber Optic Sensor
Fiber Laser
Lab & Research

Features:

High Isolation
High Power
Low Insertion Loss
High Reliability



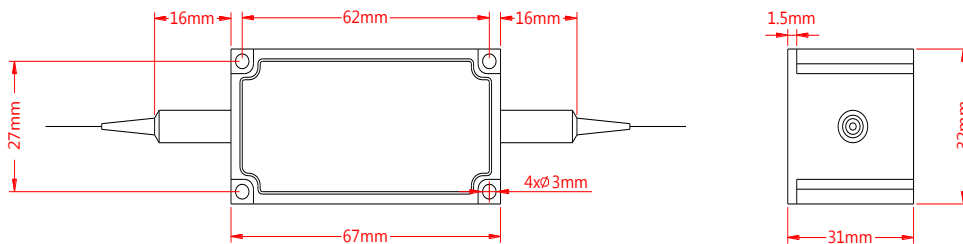
Specification:

Parameter	Symbol	Value	Unit
Center Wavelength	λ	1050	nm
Bandwidth	BW	±50	nm
Typ. Insertion Loss	IL	0.9	dB
Max. Insertion Loss	IL	1.4	dB
Typ. Peak Isolation	Iso	25	dB
Min. Isolation	Iso	18	dB
Max. Polarization Dependent Loss	PDL	0.2	dB
Min. Return Loss	RL	50	dB
Max. Optical Power (CW)	P	1, 3, 5, 10, 20 or customized	W
Max. Peak Power	P	5, 10 or customized	kW
Max. Tensile Load		5	N
Fiber Type		HI 1060 fiber	-
Operating Temperature	T	+5~65	°C
Storage Temperature	T	-40~85	°C
Package Dimension			mm

Notice: Above specifications are tested without connector in room temperature @23°C.

For devices with connectors, IL will be 0.3dB higher, RL will be 5dB lower. Connectors only 1W CW guarantee.

Drawing:



Ordering Information (Part Number):

HBPII-**WWW**-**HH**-**FF**-**J**-**LL**-**CC**

WWW	HH	FF	J	LL	CC
Wavelength	Handling Power	Fiber Type	Fiber Jacket	Fiber Length	Connector
1030 - 1030nm	01 - 1W	H1 - HI 1060	B - 250um Bare Fiber	05 - 0.5m	NE - None
1040 - 1040nm	03 - 3W	SS - Specify	9 - 900um Loose Tube	10 - 1.0m	FA - FC/APC
1050 - 1050nm	05 - 5W			15 - 1.5m	FU - FC/UPC
1053 - 1053nm	10 - 10W			20 - 2.0m	SA - SC/APC
1060 - 1060nm	20 - 20W			SS - Specify	SU - SU/APC
1064 - 1064nm	SS - Specify				LA - LC/APC
SSSS - Specify					LU - LC/UPC
					SS - Specify