

## 1080nm SM Fixed In-line Optical Attenuator

1080nm SM Fixed In-line Optical Attenuator is a fiber component which can attenuate the optical power with a fixed attenuation value, the attenuation value can be up to 40dB, it's widely used in optical power testing system, fiber line protection and optical power monitoring field. High power type is available upon request.

### Application:

Optical Power Monitoring  
Fiber Line Protection  
Testing System  
Lab And Research

### Features:

Low Excess Loss  
High Power  
High Attenuation  
High Reliability



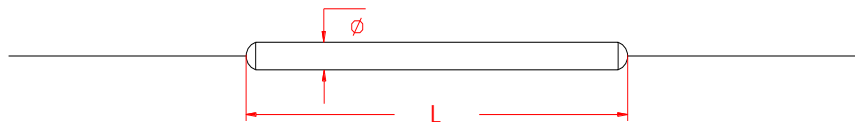
### Specification:

Parameter	Symbol	Value	Unit
Center Wavelength	$\lambda$	1080	nm
Bandwidth	BW	$\pm 10$	nm
Typ. Excess Loss	EL	0.5	dB
Max. Excess Loss	EL	0.7	dB
Attenuation and Tolerance		1 $\pm$ 0.1, 2 $\pm$ 0.2, 3 $\pm$ 0.3, 5 $\pm$ 0.7, 10 $\pm$ 1.0, 15 $\pm$ 1.8, 20 $\pm$ 2.5, 30 $\pm$ 3.0, or customized	dB
Max. Optical Power (CW)	P	2	W
Max. Tensile Load		5	N
Fiber Type		HI 1060 fiber	-
Operating Temperature	T	-40~85	$^{\circ}$ C
Storage Temperature	T	-40~85	$^{\circ}$ C
Package Dimension		$\Phi 3.0 \times L54$	mm

Notice: Above specifications are tested at center wavelength without connector in room temperature @23 $^{\circ}$ C.

For devices with connectors, EL will be 0.2dB higher. Connectors only 1W CW optical power guarantee.

### Drawing:



### Ordering Information (Part Number):

SMFIA- <b>WWWW</b> - <b>PP</b> - <b>AA</b> - <b>FF</b> - <b>J</b> - <b>LL</b> - <b>CC</b>							
<b>WWWW</b>	<b>PP</b>	<b>AA</b>	<b>FF</b>	<b>J</b>	<b>LL</b>	<b>CC</b>	
Wavelength	Port	Attenuation	Fiber Type	Fiber Jacket	Fiber Length	Connector	
1030 - 1030nm	11 - 1x1	01 - 1dB	H1 - HI 1060	B - 250um Bare Fiber	05 - 0.5m	NE - None	
1040 - 1040nm		02 - 2dB	SS - Specify	9 - 900um Loose Tube	10 - 1.0m	FA - FC/APC	
1050 - 1050nm		03 - 3dB			15 - 1.5m	FU - FC/UPC	
1053 - 1053nm		05 - 5dB			20 - 2.0m	SA - SC/APC	
1060 - 1060nm		10 - 10dB			SS - Specify	SU - SU/APC	
1064 - 1064nm		15 - 15dB				LA - LC/APC	
1080 - 1080nm		20 - 20dB					LU - LC/UPC
		30 - 30dB					SS - Specify
		SS - Specify					