

950nm SM Fixed In-line Optical Attenuator

950nm SM Fixed In-line Optical Attenuator is a fiber component which can attenuate the optical power with a fixed attenuation value, the attenuation value can be up to 40dB, it's widely used in optical power testing system, fiber line protection and optical power monitoring field. High power type is available upon request.

Application:

Optical Power Monitoring
Fiber Line Protection
Testing System
Lab And Research

Features:

Low Excess Loss
High Power
High Attenuation
High Reliability



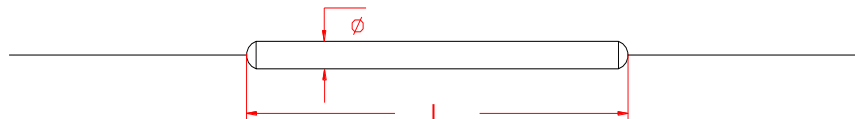
Specification:

Parameter	Symbol	Value	Unit
Center Wavelength	λ	950	nm
Bandwidth	BW	± 10	nm
Typ. Excess Loss	EL	0.5	dB
Max. Excess Loss	EL	0.7	dB
Attenuation and Tolerance		1 \pm 0.1, 2 \pm 0.2, 3 \pm 0.3, 5 \pm 0.7, 10 \pm 1.0, 15 \pm 1.8, 20 \pm 2.5, 30 \pm 3.0, 40 \pm 4.0	dB
Max. Optical Power (CW)	P	2	W
Max. Tensile Load		5	N
Fiber Type		HI 1060 fiber	-
Operating Temperature	T	-40~85	$^{\circ}$ C
Storage Temperature	T	-40~85	$^{\circ}$ C
Package Dimension		$\Phi 3.0 \times L54$	mm

Notice: Above specifications are tested at center wavelength without connector in room temperature @23 $^{\circ}$ C.

For devices with connectors, EL will be 0.2dB higher. Connectors only 1W CW optical power guarantee.

Drawing:



Ordering Information (Part Number):

SMFIA- WWW - PP - AA - FF - D - J - LL - CC							
WWW	PP	AA	FF	D	J	LL	CC
Wavelength	Port	Attenuation	Fiber Type	Package Dimension	Fiber Jacket	Fiber Length	Connector
915 - 915nm	11 - 1x1	01 - 1dB	H1 - HI 1060	1 - $\Phi 3.0 \times L54$ mm	B - 250um	05 - 0.5m	NE - None
930 - 930nm		02 - 2dB	SS - Specify	A - 90x20x10mm	Bare Fiber	10 - 1.0m	FA - FC/APC
940 - 940nm		03 - 3dB		S - Specify	9 - 900um	15 - 1.5m	FU - FC/UPC
950 - 950nm		05 - 5dB			Loose Tube	20 - 2.0m	SA - SC/APC
975 - 975nm		10 - 10dB			2 - 2.0mm	SS - Specify	SU - SU/APC
980 - 980nm		15 - 15dB			Loose Tube		LA - LC/APC
		20 - 20dB			3 - 3.0mm		LU - LC/UPC
		30 - 30dB			Loose Tube		SS - Specify
		40 - 40dB					
		SS - Specify					