

780nm PM Fixed In-line Optical Attenuator

780nm Polarization Maintaining (PM) Fixed In-line Optical Attenuator is a fiber component which can attenuate the optical power with a fixed attenuation value, the attenuation value can be up to 40dB, it's widely used in optical power testing system, fiber line protection and optical power monitoring field. High power type is available upon request.

Application:

Optical Power Monitoring
Fiber Line Protection
Testing System
Lab And Research

Features:

High Extinction Ratio
Low Excess Loss
High Power
High Attenuation



Specification:

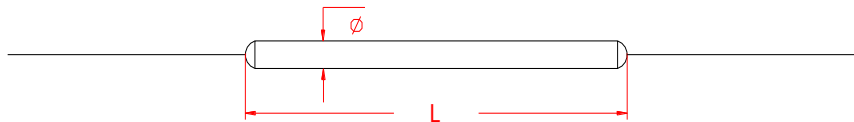
Parameter	Symbol	Value	Unit
Center Wavelength	λ	780	nm
Bandwidth	BW	± 10	nm
Typ. Excess Loss	EL	0.5	dB
Max. Excess Loss	EL	0.8	dB
Min. Extinction Ratio	ER	20	dB
Attenuation and Tolerance		1 \pm 0.1, 2 \pm 0.2, 3 \pm 0.3, 5 \pm 0.7, 10 \pm 1.0, 15 \pm 1.8, 20 \pm 2.5, 30 \pm 3.0 or customized	dB
Max. Optical Power (CW)	P	2	W
Max. Tensile Load		5	N
Fiber Type		PM Panda fiber	-
Operating Temperature	T	-40~85	$^{\circ}$ C
Storage Temperature	T	-40~85	$^{\circ}$ C
Package Dimension		$\Phi 3.0 \times L54$	mm

Notice: Above specifications are tested at center wavelength without connector in room temperature @23 $^{\circ}$ C.

For devices with connectors, EL will be 0.2dB higher. ER will be 2dB lower, Connectors only 1W CW optical power guarantee.

Slow axis is default aligned to the connector key.

Drawing:



Ordering Information (Part Number):

PMFIA- WWW - PP - AA - J - LL - CC					
WWW	PP	AA	J	LL	CC
Wavelength	Port	Attenuation	Fiber Jacket	Fiber Length	Connector
760 - 760nm	11 - 1x1	01 - 1dB	B - 250um Bare Fiber	05 - 0.5m	NE - None
780 - 780nm		02 - 2dB	9 - 900um Loose Tube	10 - 1.0m	FA - FC/APC
785 - 785nm		03 - 3dB		15 - 1.5m	FU - FC/UPC
790 - 790nm		05 - 5dB		20 - 2.0m	SA - SC/APC
793 - 793nm		10 - 10dB		SS - Specify	SU - SU/APC
		15 - 15dB			LA - LC/APC
		20 - 20dB			LU - LC/UPC
	30 - 30dB			SS - Specify	
	SS - Specify				