

1940nm SM Fixed In-line Optical Attenuator

1940nm SM Fixed In-line Optical Attenuator is a fiber component which can attenuate the optical power with a fixed attenuation value, the attenuation value can be up to 40dB, it's widely used in optical power testing system, fiber line protection and optical power monitoring field. High power type is available upon request.

Application:

Optical Power Monitoring
Fiber Line Protection
Testing System
Lab And Research

Features:

Low Excess Loss
High Power
High Attenuation
High Reliability



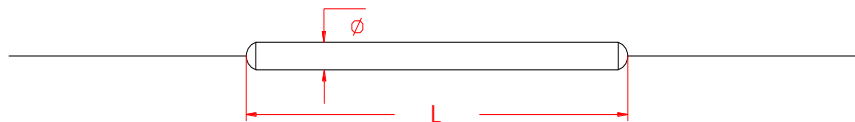
Specification:

Parameter	Symbol	Value	Unit
Center Wavelength	λ	1940	nm
Bandwidth	BW	± 10	nm
Typ. Excess Loss	EL	0.3	dB
Max. Excess Loss	EL	0.5	dB
Attenuation and Tolerance		1 \pm 0.1, 2 \pm 0.2, 3 \pm 0.3, 5 \pm 0.7, 10 \pm 1.0, 15 \pm 1.8, 20 \pm 2.5, 30 \pm 3.0, or customized	dB
Max. Optical Power (CW)	P	2	W
Max. Tensile Load		5	N
Fiber Type		SMF-28e or SM 1950 fiber	-
Operating Temperature	T	-40~85	$^{\circ}$ C
Storage Temperature	T	-40~85	$^{\circ}$ C
Package Dimension		$\Phi 3.0 \times L54$	mm

Notice: Above specifications are tested at center wavelength without connector in room temperature @23 $^{\circ}$ C.

For devices with connectors, EL will be 0.2dB higher. Connectors only 1W CW optical power guarantee.

Drawing:



Ordering Information (Part Number):

SMFIA- WWWW - PP - AA - FF - J - LL - CC						
WWWW	PP	AA	FF	J	LL	CC
Wavelength	Port	Attenuation	Fiber Type	Fiber Jacket	Fiber Length	Connector
1940 - 1940nm	11 - 1x1	01 - 1dB	S1 - SM 1950	B - 250um Bare Fiber	05 - 0.5m	NE - None
1950 - 1950nm		02 - 2dB	S2 - SMF-28e	9 - 900um Loose Tube	10 - 1.0m	FA - FC/APC
2000 - 2000nm		03 - 3dB	SS - Specify		15 - 1.5m	FU - FC/UPC
2050 - 2050nm		05 - 5dB			20 - 2.0m	SA - SC/APC
		10 - 10dB			SS - Specify	SU - SU/APC
		15 - 15dB				LA - LC/APC
		20 - 20dB				LU - LC/UPC
		30 - 30dB				SS - Specify
		40 - 40dB				
		SS - Specify				