

1590nm SM Fixed In-line Optical Attenuator

1590nm SM Fixed In-line Optical Attenuator is a fiber component which can attenuate the optical power with a fixed attenuation value, the attenuation value can be up to 40dB, it's widely used in optical power testing system, fiber line protection and optical power monitoring field. High power type is available upon request.

Application:

Optical Power Monitoring
Fiber Line Protection
Testing System
Lab And Research

Features:

Low Excess Loss
High Power
High Attenuation
High Reliability



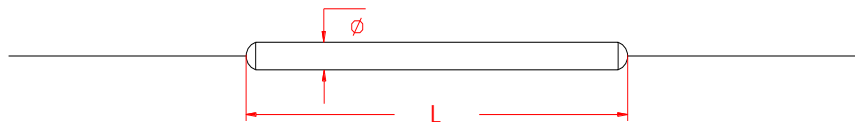
Specification:

Parameter	Symbol	Value	Unit
Center Wavelength	λ	1590	nm
Bandwidth	BW	± 10	nm
Typ. Excess Loss	EL	0.4	dB
Max. Excess Loss	EL	0.6	dB
Attenuation and Tolerance		1 \pm 0.1, 2 \pm 0.2, 3 \pm 0.3, 5 \pm 0.7, 10 \pm 1.0, 15 \pm 1.8, 20 \pm 2.5, 30 \pm 3.0, or customized	dB
Max. Optical Power (CW)	P	2	W
Max. Tensile Load		5	N
Fiber Type		SMF-28e fiber	-
Operating Temperature	T	-40~85	$^{\circ}$ C
Storage Temperature	T	-40~85	$^{\circ}$ C
Package Dimension		$\Phi 3.0 \times L54$	mm

Notice: Above specifications are tested at center wavelength without connector in room temperature @23 $^{\circ}$ C.

For devices with connectors, EL will be 0.2dB higher. Connectors only 1W CW optical power guarantee.

Drawing:



Ordering Information (Part Number):

SMFIA- WWW - PP - AA - FF - J - LL - CC							
WWW	PP	AA	FF	J	LL	CC	
Wavelength	Port	Attenuation	Fiber Type	Fiber Jacket	Fiber Length	Connector	
1310 - 1310nm	11 - 1x1	01 - 1dB	S2 - SMF-28e	B - 250um Bare Fiber	05 - 0.5m	NE - None	
1480 - 1480nm		02 - 2dB	SS - Specify	9 - 900um Loose Tube	10 - 1.0m	FA - FC/APC	
1550 - 1550nm		03 - 3dB			15 - 1.5m	FU - FC/UPC	
1570 - 1570nm		05 - 5dB			20 - 2.0m	SA - SC/APC	
1590 - 1590nm		10 - 10dB			SS - Specify	SU - SU/APC	
1625 - 1625nm		15 - 15dB				LA - LC/APC	
1650 - 1650nm		20 - 20dB					LU - LC/UPC
		30 - 30dB					SS - Specify
		SS - Specify					