

## 930nm 1x2 2x2 SM Fiber Fused Coupler

930nm 1x2, 2x2 SM Fused Coupler is built with fused biconical taper (FBT) technology, optical signal power can be splitted into two parts with even or various coupling ratio by the FBT Coupler, it's widely applied in fiber optic transmission and fiber optic sensor field, the MM and PM types are available upon request.

### Application:

Optical Signal Transmission  
Fiber Optic Sensor  
Fiber Amplifier  
Optical Diffraction System

### Features:

Low Excess Loss  
High Return Loss  
Low Insertion Loss  
High Reliability



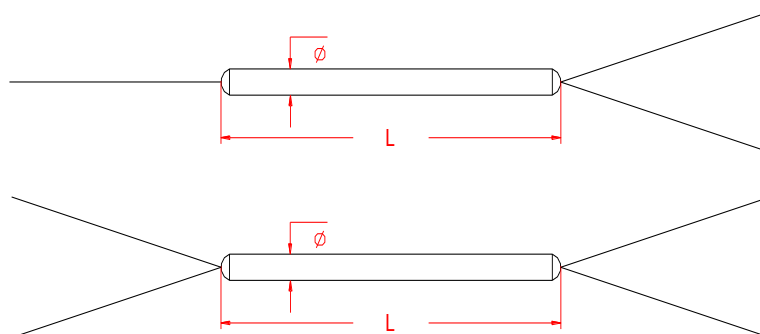
### Specification:

| Parameter                        | Symbol    | Value   | Unit |
|----------------------------------|-----------|---|------|
| Center Wavelength                | $\lambda$ | 930   | nm   |
| Bandwidth                        | BW        | $\pm 10$  | nm   |
| Max. Excess Loss                 | EL        | 0.1   | dB   |
| Max. Insertion Loss              | 50/50     | 3.6/3.6   | dB   |
|                                  | 40/60     | 4.8/2.8   | dB   |
|                                  | 30/70     | 6.1/2.0   | dB   |
|                                  | 20/80     | 8.0/1.3   | dB   |
|                                  | 10/90     | 12.0/0.8  | dB   |
|                                  | 5/95      | 13.8/0.4  | dB   |
|                                  | 3/97      | 19.0/0.4  | dB   |
|                                  | 2/98      | 20.0/0.3  | dB   |
|                                  | 1/99      | 22.0/0.3  | dB   |
| Max. Polarization Dependent Loss | PDL       | 0.15  | dB   |
| Min. Directivity                 |           | 50  | dB   |
| Min. Return Loss                 | RL        | 50  | dB   |
| Fiber Type                       |           | HI 1060, HI 1060 flex, OFS980 fiber   | -    |
| Max. Tensile Load                |           | 5   | N    |
| Max. Optical Power (CW)          | P         | 2   | W    |
| Operating Temperature            | T         | -40~75  | °C   |
| Storage Temperature              | T         | -40~85  | °C   |
| Package Dimension                |           | $\Phi 3.0 \times L40$ for Bare Fiber<br>$\Phi 3.0 \times L54$ for Bare Fiber or 900um Loose Tube<br>90x20x10 for 2.0 or 3.0mm Loose Tube<br>100x80x10 for 2.0 or 3.0mm Loose Tube | mm   |

Notice: Above specifications are tested at center wavelength without connector in room temperature @23°C.

For devices with connectors, IL will be 0.3dB higher, RL will be 5dB lower, Connectors only 1W CW optical power guarantee.

### Drawing:



**Ordering Information (Part Number):****SMFUC-~~WWW~~-~~PP~~-~~RR~~-~~FF~~-~~D~~-~~J~~-~~LL~~-~~CC~~**

| <b>WWW</b>        | <b>PP</b>   | <b>RR</b>             | <b>FF</b>         | <b>D</b>                 | <b>J</b>             | <b>LL</b>           | <b>CC</b>        |
|-------------------|-------------|-----------------------|-------------------|--------------------------|----------------------|---------------------|------------------|
| <b>Wavelength</b> | <b>Port</b> | <b>Coupling Ratio</b> | <b>Fiber Type</b> | <b>Package Dimension</b> | <b>Fiber Jacket</b>  | <b>Fiber Length</b> | <b>Connector</b> |
| 915 - 915nm       | 12 - 1x2    | 01 - 1/99             | O9 - OFS980       | 1 - $\Phi$ 3.0x40mm      | B - 250um Bare Fiber | 05 - 0.5m           | NE - None        |
| 930 - 930nm       | 22 - 2x2    | 02 - 2/98             | H1 - HI 1060      | 2 - $\Phi$ 3.0x54mm      | 9 - 900um Loose      | 10 - 1.0m           | FA - FC/APC      |
| 940 - 940nm       |             | 03 - 3/97             | HF - HI 1060      | 3 - 90x20x10mm           | Tube                 | 15 - 1.5m           | FU - FC/UPC      |
| 950 - 950nm       |             | 05 - 5/95             | Flex              | 4 - 100x80x10mm          | 2 - 2.0mm Loose      | 20 - 2.0m           | SA - SC/APC      |
| 975 - 975nm       |             | 10 - 10/90            | SS - Specify      |                          | Tube                 | SS - Specify        | SU - SU/APC      |
| 980 - 980nm       |             | 20 - 20/80            |                   |                          | 3 - 3.0mm Loose      |                     | LA - LC/APC      |
|                   |             | 30 - 30/70            |                   |                          | Tube                 |                     | LU - LC/UPC      |
|                   |             | 40 - 40/60            |                   |                          |                      |                     | SS - Specify     |
|                   |             | 50 - 50/50            |                   |                          |                      |                     |                  |
|                   |             | SS - Specify          |                   |                          |                      |                     |                  |