

940nm SM Fixed In-line Optical Attenuator

940nm SM Fixed In-line Optical Attenuator is a fiber component which can attenuate the optical power with a fixed attenuation value, the attenuation value can be up to 40dB, it's widely used in optical power testing system, fiber line protection and optical power monitoring field. High power type is available upon request.

Application:

Optical Power Monitoring
Fiber Line Protection
Testing System
Lab And Research

Features:

Low Excess Loss
High Power
High Attenuation
High Reliability



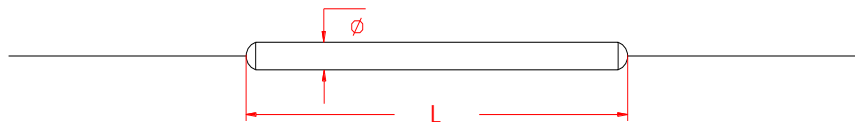
Specification:

Parameter	Symbol	Value	Unit
Center Wavelength	λ	940	nm
Bandwidth	BW	± 10	nm
Typ. Excess Loss	EL	0.5	dB
Max. Excess Loss	EL	0.7	dB
Attenuation and Tolerance		1 \pm 0.1, 2 \pm 0.2, 3 \pm 0.3, 5 \pm 0.7, 10 \pm 1.0, 15 \pm 1.8, 20 \pm 2.5, 30 \pm 3.0, or customized	dB
Max. Optical Power (CW)	P	2	W
Max. Tensile Load		5	N
Fiber Type		HI 1060 fiber	-
Operating Temperature	T	-40~85	°C
Storage Temperature	T	-40~85	°C
Package Dimension		$\Phi 3.0 \times L54$	mm

Notice: Above specifications are tested at center wavelength without connector in room temperature @23°C.

For devices with connectors, EL will be 0.2dB higher. Connectors only 1W CW optical power guarantee.

Drawing:



Ordering Information (Part Number):

SMFIA- WWW - PP - AA - FF - J - LL - CC						
WWW	PP	AA	FF	J	LL	CC
Wavelength	Port	Attenuation	Fiber Type	Fiber Jacket	Fiber Length	Connector
915 - 915nm	11 - 1x1	01 - 1dB	H1 - HI 1060	B - 250um Bare Fiber	05 - 0.5m	NE - None
930 - 930nm		02 - 2dB	SS - Specify	9 - 900um Loose Tube	10 - 1.0m	FA - FC/APC
940 - 940nm		03 - 3dB			15 - 1.5m	FU - FC/UPC
950 - 950nm		05 - 5dB			20 - 2.0m	SA - SC/APC
975 - 975nm		10 - 10dB			SS - Specify	SU - SU/APC
980 - 980nm		15 - 15dB				LA - LC/APC
		20 - 20dB				LU - LC/UPC
		30 - 30dB				SS - Specify
		SS - Specify				