

1053nm 1x2 2x2 SM Fiber Fused Coupler

1053nm 1x2, 2x2 SM Fused Coupler is built with fused biconical taper (FBT) technology, optical signal power can be splitted into two parts with even or various coupling ratio by the FBT Coupler, it's widely applied in fiber optic transmission and fiber optic sensor field, the MM and PM types are available upon request.

Application:

Optical Signal Transmission
 Fiber Optic Sensor
 Fiber Amplifier
 Optical Diffraction System

Features:

Low Excess Loss
 High Return Loss
 Low Insertion Loss
 High Reliability



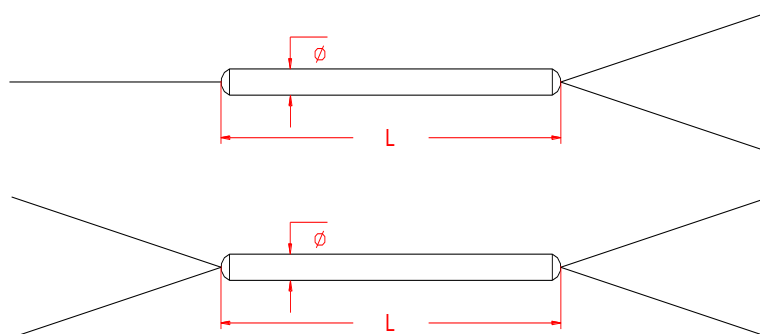
Specification:

Parameter	Symbol	Value	Unit
Center Wavelength	λ	1053	nm
Bandwidth	BW	± 10	nm
Max. Excess Loss	EL	0.1	dB
Max. Insertion Loss	50/50	3.6/3.6	dB
	40/60	4.8/2.8	dB
	30/70	6.1/2.0	dB
	20/80	8.0/1.3	dB
	10/90	12.0/0.8	dB
	5/95	13.8/0.4	dB
	3/97	19.0/0.4	dB
	2/98	20.0/0.3	dB
	1/99	22.0/0.3	dB
Max. Polarization Dependent Loss	PDL	0.15	dB
Min. Directivity		50	dB
Min. Return Loss	RL	50	dB
Fiber Type		HI 1060, HI 1060 flex, OFS980 fiber	-
Max. Tensile Load		5	N
Max. Optical Power (CW)	P	2	W
Operating Temperature	T	-40~75	°C
Storage Temperature	T	-40~85	°C
Package Dimension		$\Phi 3.0 \times L40$ for Bare Fiber $\Phi 3.0 \times L54$ for Bare Fiber or 900um Loose Tube 90x20x10 for 2.0 or 3.0mm Loose Tube 100x80x10 for 2.0 or 3.0mm Loose Tube	mm

Notice: Above specifications are tested at center wavelength without connector in room temperature @23°C.

For devices with connectors, IL will be 0.3dB higher, RL will be 5dB lower, Connectors only 1W CW optical power guarantee.

Drawing:



Ordering Information (Part Number):**SMFUC-~~WWW~~-~~PP~~-~~RR~~-~~FF~~-~~D~~-~~J~~-~~LL~~-~~CC~~**

WWW	PP	RR	FF	D	J	LL	CC
Wavelength	Port	Coupling Ratio	Fiber Type	Package Dimension	Fiber Jacket	Fiber Length	Connector
1030 - 1030nm	12 - 1x2	01 - 1/99	O9 - OFS980	1 - Φ 3.0x40mm	B - 250um Bare Fiber	05 - 0.5m	NE - None
1040 - 1040nm	22 - 2x2	02 - 2/98	H1 - HI 1060	2 - Φ 3.0x54mm	9 - 900um Loose	10 - 1.0m	FA - FC/APC
1050 - 1050nm		03 - 3/97	HF - HI 1060	3 - 90x20x10mm	Tube	15 - 1.5m	FU - FC/UPC
1053 - 1053nm		05 - 5/95	Flex	4 - 100x80x10mm	2 - 2.0mm Loose	20 - 2.0m	SA - SC/APC
1060 - 1060nm		10 - 10/90	SS - Specify		Tube	SS - Specify	SU - SU/APC
1064 - 1064nm		20 - 20/80			3 - 3.0mm Loose		LA - LC/APC
1080 - 1080nm		30 - 30/70			Tube		LU - LC/UPC
		40 - 40/60					SS - Specify
		50 - 50/50					
		SS - Specify					